

riscogroup.com



VUpoint

Dome

P2P PoE Network Camera



Model: RVCM32P1



Quick Guide

Language

Page



3



5

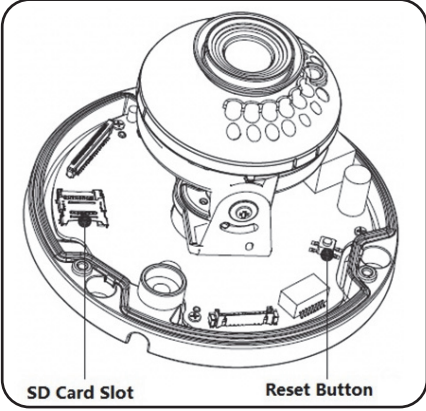


7



9

Dome PoE Network Camera Components



Note: For reset (used to return the camera settings to factory default mode), long press for 10 seconds and then the light turns off.

Indication	Status
Red light normally on	Booting
Green light slow flashing	IP Camera is not connected to the RISCO Cloud. Please check for internet connection and try to connect again by rebooting the IP Camera
Green light normally on	IP Camera is successfully connected to the RISCO Cloud
Red and green lights flash alternately	Device upgrade
Red light slow flashing	Network connection failure or disconnection after network connection success
Red light quick flashing	Device malfunction, fail to boot up; alarm or SD card malfunction

Defining IP Camera Settings

Step 1

Your PoE supported camera can be used without electrical connection by using only the Ethernet cable. To achieve this, connect one end of the Ethernet cable (LAN) to the camera Ethernet port and the other side to:

1. A PoE injector that is connected to your network or
2. To a PoE supported router or switch.

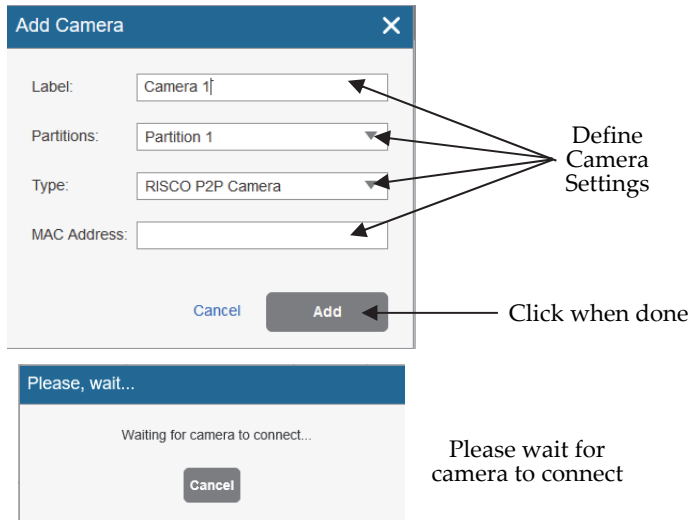
Alternatively, your IP camera can also be powered by a RISCO supplied 12V DC adaptor.

Step 2

Log into the Installer Administration at www.riscocloud.com/installer.

Step 3

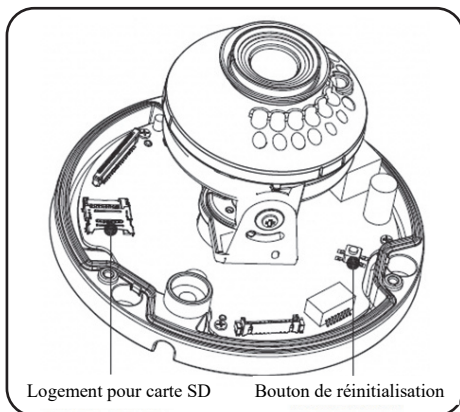
Once logged in, click Control Panels List → select the desired control panel → click Network Cameras → click **+ Add Camera** and then fill the required fields as shown in the example below.



Step 4

Once the "camera is ready for use" message is displayed, click OK. The defined IP camera is displayed in the IP Cameras page and ready for use.

Composants de la caméra IP PoE Dôme



Remarque : pour réinitialiser la caméra (c'est-à-dire rétablir ses paramètres par défaut), appuyez sur le bouton de réinitialisation pendant 10 secondes ; le voyant s'éteint.

Indication	État
Voyant rouge allumé normalement	Démarrage en cours
Voyant vert clignotant lentement	La caméra IP n'est pas connectée au RISCO Cloud. Vérifiez la connexion Internet et essayez de vous reconnecter en redémarrant la caméra IP.
Voyant vert allumé normalement	La caméra IP a bien été connectée au RISCO Cloud.
Voyants rouge et vert clignotant en alternance	Mise à niveau de la caméra
Voyant rouge clignotant lentement	Échec de la connexion réseau ou déconnexion après une connexion réseau réussie
Voyant rouge clignotant rapidement	Dysfonctionnement de l'appareil, échec du démarrage, alerte ou dysfonctionnement de la carte SD

Définition des paramètres de la caméra IP

Étape 1

Vous pouvez utiliser votre caméra compatible PoE sans connexion électrique à l'aide du câble Ethernet. Pour cela, raccordez l'une des extrémités du câble Ethernet (LAN) au port Ethernet de la caméra, et l'autre extrémité comme suit :

1. À un injecteur PoE connecté à votre réseau ou
2. À un routeur ou un switch compatible PoE.

Vous pouvez également alimenter votre caméra IP à l'aide d'un adaptateur 12 V CC fourni par RISCO.

Étape 2

Connectez-vous à l'application Installateur Admin sur la page www.riscocloud.com/installer.

Étape 3

Une fois que vous êtes connecté, cliquez sur Liste des centrales → sélectionnez la centrale de votre choix → cliquez sur Caméras IP → cliquez sur **+ Ajout Caméra**, puis renseignez les champs requis, comme dans l'exemple suivant.

Ajout Caméra

Nom :

Partitions :

Type :

Adresse MAC :

Please, wait...

Waiting for camera to connect...

Définissez les paramètres de la caméra

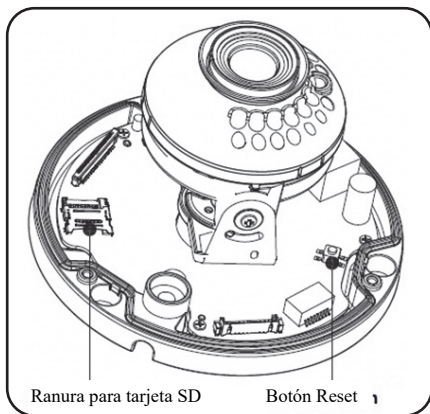
Cliquez lorsque vous avez terminé

Attendez que la caméra se connecte

Étape 4

Lorsque le message « Caméra identifiée avec succès » s'affiche, cliquez sur OK. La caméra IP configurée s'affiche sur la page Caméras IP. Elle est prête à être utilisée.

Componentes de la cámara IP PoE Dome



Nota: Para Reset (restaurar los ajustes de fábrica de la cámara), mantenga presionado durante 10 segundos y la luz se apagará.

Indicación	Significado
Rojo fijo	Arrancando
Verde con parpadeo lento	La cámara IP no está conectada a RISCO Cloud. Compruebe la conexión a Internet y reinicie la cámara IP para intentar volver a conectarla
Verde fijo	La cámara IP está conectada correctamente a RISCO Cloud
Verde y rojo con parpadeo alterno	Actualización del dispositivo
Rojo con parpadeo lento	Error de conexión de red o desconexión tras una conexión de red correcta
Rojo con parpadeo rápido	Error de funcionamiento del dispositivo, error de arranque, error de alarma o de tarjeta SD

Definir la configuración de la cámara IP

Paso 1

Su cámara compatible con PoE se puede utilizar sin conexión eléctrica, solo mediante el cable Ethernet. Para ello, conecte un extremo del cable Ethernet (LAN) al puerto Ethernet de la cámara y el otro extremo a:

1. Un inyector PoE conectado a la red, o bien
2. Un router o conmutador (switch) compatible con PoE.

Otra posibilidad es alimentar su cámara IP con el adaptador de CC de 12 V suministrado por RISCO.

Paso 2

Conéctese a la aplicación de administración de instaladores en www.riscocloud.com/installer.

Paso 3

Una vez conectado, haga clic en la lista de paneles de control → seleccione el panel de control que desee → haga clic en Cámaras de red (Network Cameras) → haga clic en

+ Add Camera y seguidamente rellene los campos necesarios como se muestra en el siguiente ejemplo.

Defina la configuración de la cámara

Haga clic cuando haya terminado

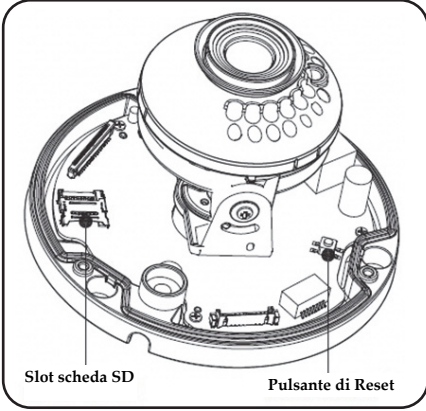
Espere a que se conecte la cámara

Paso 4

Cuando aparezca el mensaje “Camera is ready for use”, pulse **OK**. La cámara IP definida se visualizará en la página de cámaras IP y estará lista para su uso.



Componenti telecamera Dome IP PoE



Nota: Per effettuare il reset (usato per caricare i valori di default di fabbrica), premere il tasto Reset per almeno 10 secondi e attendere lo spegnimento del LED.

Indicazione	Stato
LED rosso acceso	Avvio in corso.
Lampeggio lento del LED verde	La telecamera IP non è connessa al cloud RISCO. Attendere e successivamente verificare la connessione internet. Provare a connettersi riavviando la telecamera.
LED verde acceso	La telecamera è connessa al cloud RISCO
LED rosso e verde lampeggianti in sequenza	Aggiornamento firmware dispositivo.
Lampeggio lento del LED rosso	Errore di connessione alla rete o disconnessione dopo una connessione riuscita.
Lampeggio veloce del LED rosso	Malfunzionamento del dispositivo, errore in fase di inizializzazione, allarme o scheda SD non funzionante

Configurazione della telecamera IP

Passo 1

La tua telecamera supporta la connessione PoE, ovvero la possibilità di prendere l'alimentazione tramite cavo ethernet senza nessuna altra connessione di alimentazione. Per ottenere questa caratteristica collegare un connettore di un cavo ethernet (LAN) alla porta Ethernet della telecamera e l'altro connettore del cavo a:

1. Un iniettore PoE connesso alla rete LAN
2. Un router o switch che supporta il PoE.

In alternativa la telecamera può anche essere alimentata esternamente al cavo di rete tramite un alimentatore RISCO 12Vcc.

Passo 2

Effettuare il login nell'area installatore del Cloud RISCO (www.riscocloud.com/installer).

Passo 3

Una volta effettuato l'accesso, cliccare su lista centrali → selezionare la centrale → fare click su telecamere IP → cliccare su **+ Aggiungi Telecamera** quindi compilare i campi come mostrato di seguito.

The image shows two screenshots from a web interface. The top screenshot is a dialog box titled "Modifica Telecamera" with a close button (X). It contains four fields: "Etichetta:" with the value "Telecamera p2p", "Partizioni:" with a dropdown menu showing "Uffici, Magazzino", "Tipo:" with a dropdown menu showing "Telecamera RISCO P2P", and "Indirizzo MAC:" with the value "E0:50:8B:99:08:D5". At the bottom are two buttons: "Annulla" and "Fatto". Four arrows point from the text "Definire i Settaggi" to the four input fields. A fifth arrow points from the text "Cliccare per confermare" to the "Fatto" button. The bottom screenshot is a loading screen titled "Attendere prego..." with the text "In attesa connessione della telecamera ..." and an "Annulla" button. An arrow points from the text "Attendere la connessione della Telecamera" to this screenshot.

Passo 4

Quando viene visualizzato il messaggio "Telecamera pronta per l'uso", fare clic su OK. La telecamera IP definita viene visualizzata nella pagina Telecamere IP e pronta per l'uso.



Standard Limited Product Warranty (“Limited Warranty”)

RISCO Ltd. (“RISCO”) guarantee RISCO’s hardware products (“**Products**”) to be free from defects in materials and workmanship when used and stored under normal conditions and in accordance with the instructions for use supplied by RISCO, for a period of (i) 24 months from the date of delivery of the Product (the “**Warranty Period**”). This Limited Warranty covers the Product only within the country where the Product was originally purchased and only covers Products purchased as new.

Contact with customers only. This Limited Warranty is solely for the benefit of customers who purchased the Products directly from RISCO or from an authorized distributor of RISCO. RISCO does not warrant the Product to consumers and nothing in this Warranty obligates RISCO to accept Product returns directly from end users who purchased the Products for their own use from RISCO’s customer or from any installer of RISCO, or otherwise provide warranty or other services to any such end user directly. RISCO’s authorized distributor or installer shall handle all interactions with its end users in connection with this Limited Warranty. RISCO’s authorized distributor or installer shall make no warranties, representations, guarantees or statements to its end users or other third parties that suggest that RISCO has any warranty or service obligation to, or any contractual privity with, any recipient of a Product.

Remedies. In the event that a material defect in a Product is discovered and reported to RISCO during the Warranty Period, RISCO shall accept return of the defective Product in accordance with the below RMA procedure and, at its option, either (i) repair or have repaired the defective Product, or (ii) provide a replacement product to the customer.

Return Material Authorization. In the event that you need to return your Product for repair or replacement, RISCO will provide you with a Return Merchandise Authorization Number (RMA#) as well as return instructions. Do not return your Product without prior approval from RISCO. Any Product returned without a valid, unique RMA# will be refused and returned to the sender at the sender’s expense. The returned Product must be accompanied with a detailed description of the defect discovered (“**Defect Description**”) and must otherwise follow RISCO’s then-current RMA procedure published in RISCO’s website at www.riscogroup.com in connection with any such return. If RISCO determines in its reasonable discretion that any Product returned by customer conforms to the applicable warranty (“**Non-Defective Product**”), RISCO will notify the customer of such determination and will return the applicable Product to customer at customer’s expense. In addition, RISCO may propose and assess customer a charge for testing and examination of Non-Defective Product.

Entire Liability. The repair or replacement of Products in accordance with this Limited Warranty shall be RISCO’s entire liability and customer’s sole and exclusive remedy in case a material defect in a Product is discovered and reported as required herein. RISCO’s obligation and this Limited Warranty are contingent upon the full payment by customer for such Product and upon a proven weekly testing and examination of the Product functionality.

Limitations. This Limited Warranty is the only warranty made by RISCO with respect to the Products. The warranty is not transferable to any third party. To the maximum extent permitted by applicable law, this Limited Warranty shall not apply and will be void if: (i) the conditions set forth above are not met (including, but not limited to, full payment by customer for the Product and a proven weekly testing and examination of the Product functionality); (ii) if the Products or any part or component thereof: (a) have been subjected to improper operation or installation; (b) have been subject to neglect, abuse, willful damage, abnormal working conditions, failure to follow RISCO's instructions (whether oral or in writing); (c) have been misused, altered, modified or repaired without RISCO's written approval or combined with, or installed on products, or equipment of the customer or of any third party; (d) have been damaged by any factor beyond RISCO's reasonable control such as, but not limited to, power failure, electric power surges, or unsuitable third party components and the interaction of software therewith or (e) any failure or delay in the performance of the Product attributable to any means of communication provided by any third party service provider, including, but not limited to, GSM interruptions, lack of or internet outage and/or telephony failure. BATTERIES ARE EXPLICITLY EXCLUDED FROM THE WARRANTY AND RISCO SHALL NOT BE HELD RESPONSIBLE OR LIABLE IN RELATION THERETO, AND THE ONLY WARRANTY APPLICABLE THERETO, IF ANY, IS THE BATTERY MANUFACTURER'S WARRANTY. RISCO does not install or integrate the Product in the end user's security system and is therefore not responsible for and cannot guarantee the performance of the end user's security system which uses the Product or which the Product is a component of.

This Limited Warranty applies only to Products manufactured by or for RISCO. Further, this Limited Warranty does not apply to any software (including operating system) added to or provided with the Products or any third-party software, even if packaged or sold with the RISCO Product. Manufacturers, suppliers, or third parties other than RISCO may provide their own warranties, but RISCO, to the extent permitted by law and except as otherwise specifically set forth herein, provides its Products "AS IS". Software and applications distributed or made available by RISCO in conjunction with the Product (with or without the RISCO brand), including, but not limited to system software, as well as P2P services or any other service made available by RISCO in relation to the Product, are not covered under this Limited Warranty. Refer to the Terms of Service at: <https://riscocloud.com/ELAS/WebUI/UserLogin/License> for details of your rights and obligations with respect to the use of such applications, software or any service. RISCO does not represent that the Product may not be compromised or circumvented; that the Product will prevent any personal injury or property loss by burglary, robbery, fire or otherwise, or that the Product will in all cases provide adequate warning or protection. A properly installed and maintained alarm may only reduce the risk of a burglary, robbery or fire without warning, but it is not insurance or a guarantee that such will not occur or will not cause or lead to personal injury or property loss. CONSEQUENTLY, RISCO SHALL HAVE NO LIABILITY FOR ANY PERSONAL INJURY, PROPERTY DAMAGE OR OTHER LOSS BASED ON ANY CLAIM AT ALL INCLUDING A CLAIM THAT THE PRODUCT FAILED TO GIVE WARNING.

EXCEPT FOR THE WARRANTIES SET FORTH HEREIN, RISCO AND ITS LICENSORS HEREBY DISCLAIM ALL EXPRESS, IMPLIED OR STATUTORY, REPRESENTATIONS, WARRANTIES, GUARANTEES, AND CONDITIONS WITH REGARD TO THE PRODUCTS, INCLUDING BUT NOT LIMITED TO ANY REPRESENTATIONS, WARRANTIES, GUARANTEES, AND CONDITIONS OF MERCHANTABILITY, FITNESS FOR A PARTICULAR PURPOSE, TITLE AND WARRANTIES AGAINST HIDDEN OR LATENT DEFECTS, TO THE EXTENT PERMITTED BY LAW. WITHOUT LIMITING THE GENERALITY OF THE FOREGOING, RISCO AND ITS LICENSORS DO NOT REPRESENT OR WARRANT THAT: (i) THE OPERATION OR USE OF THE PRODUCT WILL BE TIMELY, SECURE, UNINTERRUPTED OR ERROR-FREE; (ii) THAT ANY FILES, CONTENT OR INFORMATION OF ANY KIND THAT MAY BE ACCESSED THROUGH THE PRODUCT SHALL REMAIN SECURED OR NON DAMAGED. CUSTOMER ACKNOWLEDGES THAT NEITHER RISCO NOR ITS LICENSORS CONTROL THE TRANSFER OF DATA OVER COMMUNICATIONS FACILITIES, INCLUDING THE INTERNET, GSM OR OTHER MEANS OF COMMUNICATIONS AND THAT RISCO'S PRODUCTS, MAY BE SUBJECT TO LIMITATIONS, DELAYS, AND OTHER PROBLEMS INHERENT IN THE USE OF SUCH MEANS OF COMMUNICATIONS. RISCO IS NOT RESPONSIBLE FOR ANY DELAYS, DELIVERY FAILURES, OR OTHER DAMAGE RESULTING FROM SUCH PROBLEMS. RISCO WARRANTS THAT ITS PRODUCTS DO NOT, TO THE BEST OF ITS KNOWLEDGE, INFRINGE UPON ANY PATENT, COPYRIGHT, TRADEMARK, TRADE SECRET OR OTHER INTELLECTUAL PROPERTY RIGHT IN ANY EVENT RISCO SHALL NOT BE LIABLE FOR ANY AMOUNTS REPRESENTING LOST REVENUES OR PROFITS, PUNITIVE DAMAGES, OR FOR ANY OTHER INDIRECT, SPECIAL, INCIDENTAL, OR CONSEQUENTIAL DAMAGES, EVEN IF THEY WERE FORESEEABLE OR RISCO HAS BEEN INFORMED OF THEIR POTENTIAL.

EMC Compliance Statement:

Hereby, RISCO Group declares that this equipment is in compliance with the essential requirements and other relevant provisions of Directive 2014/30/EU.

For the CE Declaration of Conformity please refer to our website: www.riscogroup.com



© RISCO Group, 01/2018. All rights reserved.

5IN2739 B